

HAMILTON COLLEGE FIRE SAFETY PLAN

EMERGENCY COMMUNICATIONS

¾ Report fires or other emergencies to Campus Safety by:

- x Calling x4000/911 by campus phones or 911 by cell phones
- x Manually engaging a fire alarm pull station

¾ Emergency information may be communicated to you by:

- x Building-based fire alarm horns, visual strobes or voice commands
- x Reverse 911 notifications (by email, office phone, home phone, cell phone or text message) or the emergency outdoor warning system

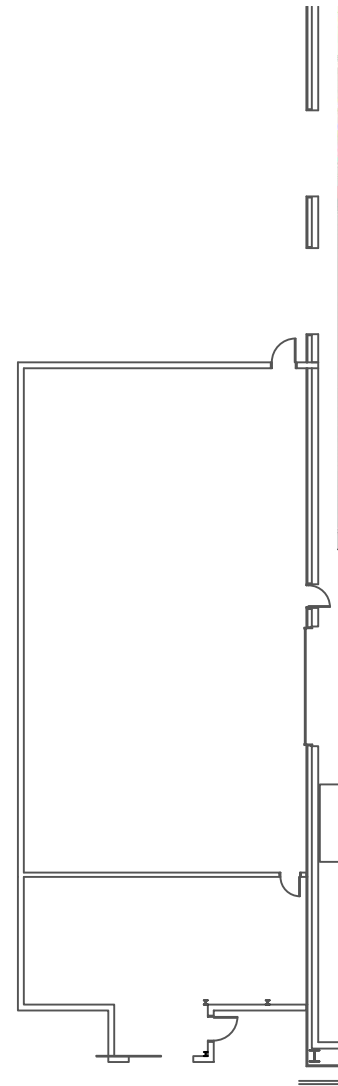
FIRE EMERGENCY

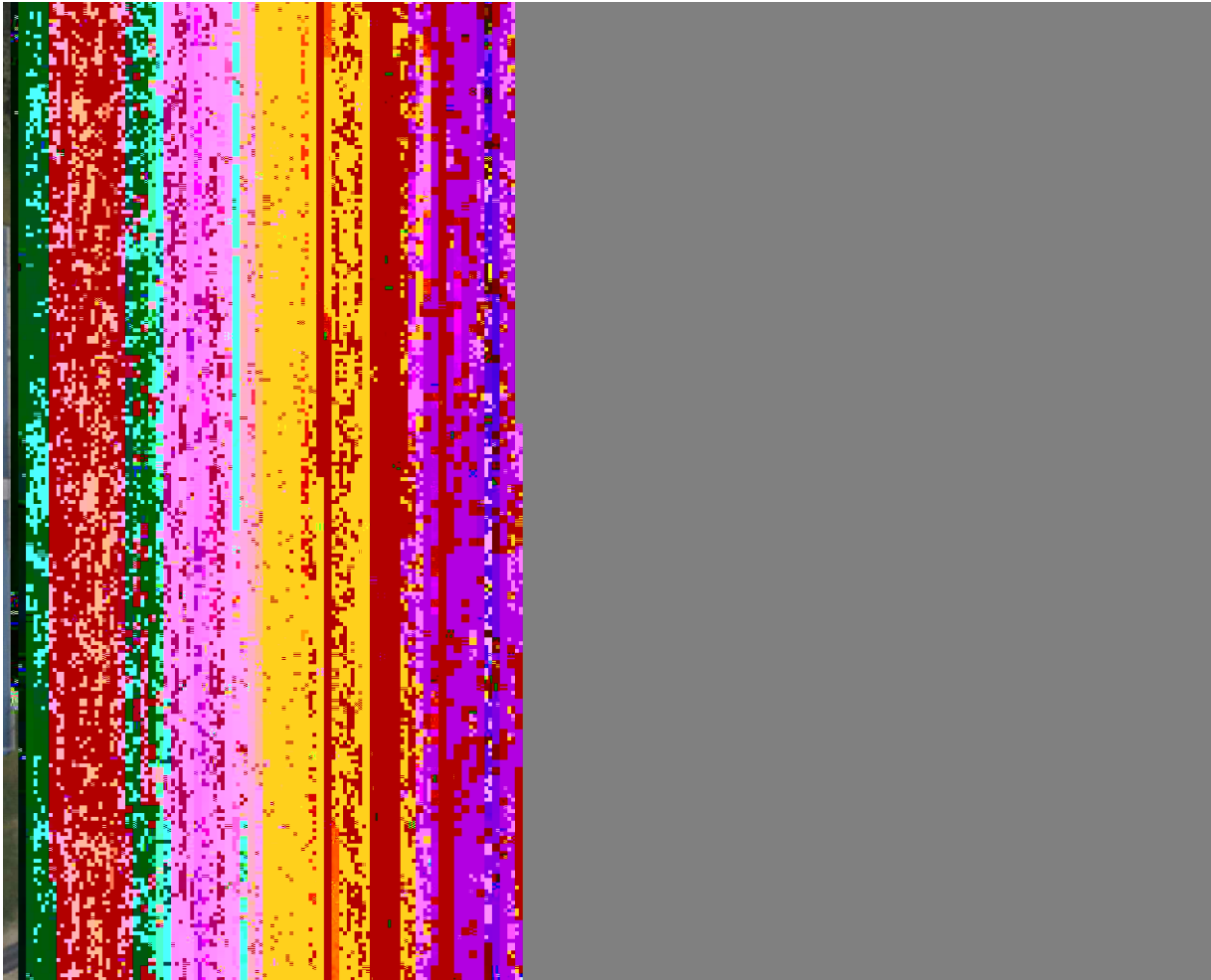
¾ If your evacuation r

EXIT



EXIT





Legend

Muster
Point

Fire Dept.

